

THE PROJECT

Covenant College was established in 1955 as an independent, residential, liberal arts college with strong ties to the Presbyterian Church. The present undergraduate enrollment is just under 1,000 students and is projected to increase to 1,300. DOBER LIDSKY MATHEY (DLM) was retained to help the College articulate space needs and develop a Master Plan to serve the College's needs over the next twenty years.

Since the original and updated campus plan, we also prepared several specific planning studies in 2014 and 2019 including a peer comparison, a facility for the arts, and a facility for an external, but related office outreach program.

CHALLENGE

The 300-acre campus is situated on a mountain ridge with a grade change of 400' from the base to the campus plateau. Although offering a splendid view, there is little open space for building sites, playfields, and the traditional campus quad-rangle. A major state highway bisects the College property, isolating a large parcel at the center of campus and further constraining development.

Facility needs include a fine and performing arts center with a music recital hall, a campus center, a new or expanded chapel, and additional academic space and student housing. Existing playfields and courts are at a premium, so must be retained, although the number of tennis courts will be increased. A parking deck will also be required as surface parking lots will be lost to building sites.

SOLUTION

The Campus Plan relocates the state highway in order to provide a more cohesive campus and the ability to provide more development closer to the campus core. This relocation results in a site for the Fine & Performing Arts Center Complex as well as an academic building. In addition, in 2010 the College purchased two parcels of land contiguous to the east campus border. This purchase allowed for the development of an athletic field.

RESULTS

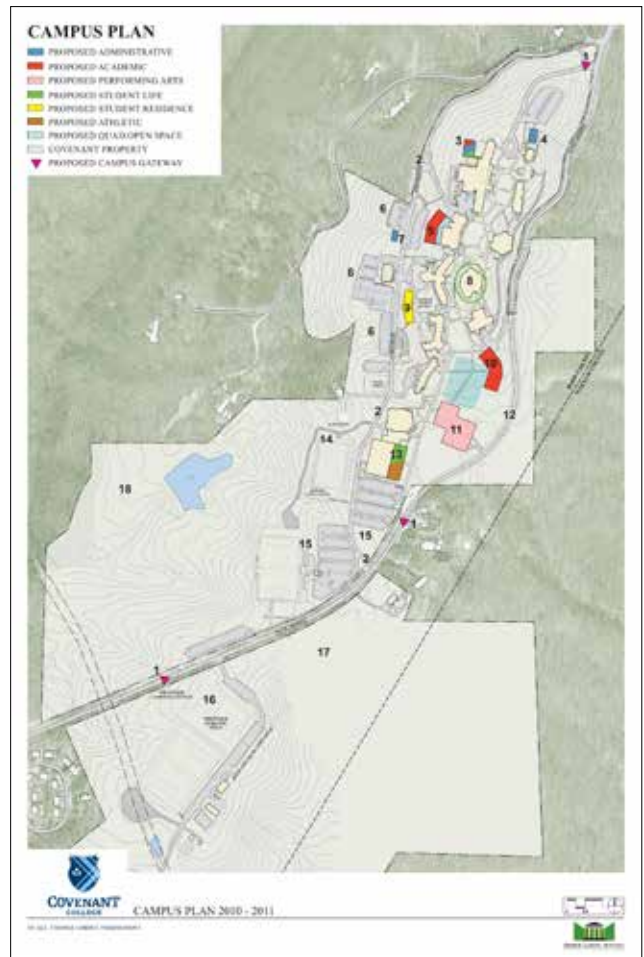
The College hired an engineer to design the relocation of Scenic Highway and to provide data for discussions with the State - which have been positive. If and when the road is relocated, the College intends to develop the Fine and Performing Arts Center. Covenant is also moving forward with a major renovation of their signature building, Carter Hall, as well as the construction of additional student housing.

REFERENCE

David J. Northcutt
Campus Architect, Director of Planning & Construction
706 419 1214
david.northcutt@covenant.edu



AERIAL VIEW / CARTER HALL
IMAGES COURTESY OF COVENANT COLLEGE



CAMPUS PLAN ILLUSTRATION

PRINCIPAL IN-CHARGE
Arthur J. Lidsky, AICP, FAAAS
Study Director

